

## ATEN Unizon

Global AV Management Platform



### Your Power to Monitor, Control, Manage

ATEN Unizon™ is a server-based software for AV and IT professionals to centrally monitor, control, and manage ATEN Modular Matrix and third-party devices connected to the ATEN Control System Controllers anytime, anywhere.

[GET FREE TRIAL!](#)



## Device Condition Monitoring

Real-time monitoring and tracking of device condition for troubleshooting and maintenance.

### Condition Detection

Automatically detects device power status, temperature, fan, and connection status, helping you perform maintenance to avoid potential device failures.

R302

Add Device ▼
Refresh

VM1600A
Actions
Upgrade
🗑️

		Device	Health	Connection	Power Supply	Power Status	Fan	Temperature
<input type="checkbox"/>	1st	R409 🗑️	!	●	●	●	●	●
<input type="checkbox"/>	1st	QAtest-1 🗑️	—	●	—	—	—	—

More

VM6404H
Actions
Upgrade
🗑️

		Device	Health	Connection	Temperature	Fan	IP Address
<input type="checkbox"/>	1st	33333_Louis VM6404H 🗑️	!	●	—	—	10.3.52.109
<input type="checkbox"/>	1st	VM6404H 🗑️	!	●	—	—	10.3.52.209

More

94 Hi, 123456

Add Device
Refresh

Upgrade
🗑️

Device	Health	Connection	Temperature	Fan
M6404H	✔️	●	●	●
M6404Herewr	✔️	●	●	●

Upgrade
🗑️

Device	Health	Connection	Power Supply	Power Status	Fan
M1600A	⚠️	●	-	-	-
Atest-1	-	●	-	-	-

Logs / Notifications Remove All

- i **Device removed**  
 The user admin was una...  
 Control Center > AIEN China  
 2019-04-15 18:05:31
- i **Device removed**  
 The user admin was una...  
 Control Center > AIEN China  
 2019-04-15 17:57:35
- i **Location added**  
 The user admin has adde...  
 2019-04-15 17:54:25
- i **Location added**  
 The user admin has adde...  
 2019-04-15 17:54:15
- i **Location added**  
 The user admin has adde...

**Alerts and Notifications**

Instantly get notified of device abnormalities to perform troubleshooting actions and reduce down-time.

**System Log**

Device usage and abnormal events are recorded so you can analyze past usability and plan future optimization.

Time	Category	Severity	Event	Description
2019-04-14 08:31:57	Device trap	Information	Device name synchronized	The name for de fully.
2019-04-14 08:31:57	Device trap	Information	Device name synchronized	The name for de fully.
2019-04-14 08:31:57	Device trap	Information	Device name synchronized	The name for de fully.
2019-04-14 00:00:00	System Task	Warning	Unable to start schedule	The server was t
2019-04-14 00:00:00	System Task	Warning	Unable to start schedule	The server was t
2019-04-14 00:00:00	System Task	Warning	Unable to start schedule	The server was t
2019-04-13 08:32:10	Device trap	Information	Device name synchronized	The name for de d successfully.
2019-04-13 08:32:10	Device trap	Information	Device name synchronized	The name for de d successfully.
2019-04-13 08:32:08	Device trap	Information	Device name synchronized	The name for de fully.
2019-04-13 08:32:08	Device trap	Information	Device name synchronized	The name for de fully.



## Global Control and Scheduling

Perform and schedule routine tasks and firmware upgrades across multiple devices simultaneously.

### Device Group Control

Execute actions instantly across multiple devices simultaneously, such as switching ports, profiles, resolutions, and video off.



### Event Scheduling

Schedule routine tasks for devices to carry out, such as setting different video contents to display at specific times of the day or week.

Schedule +

---

- Event 1
- Event 2
- Event 3
- Event 4 ...

weekly v
At 00:00 Sunday,00:...
 from

Select Device i

VM6404H v

Location <span style="font-size: 0.8em;">d</span>	Room <span style="font-size: 0.8em;">d</span>	Device
Cc ATEN <span style="font-size: 0.8em;">▶</span>	R302	VM6404
Control <span style="font-size: 0.8em;">▶</span>	ATEN China	VM6404
Control <span style="font-size: 0.8em;">▶</span>	ATEN China	VM6404

VM6404H

Actions

↑ Upgrade

🗑️

		Device <span style="font-size: 0.8em;">d</span>
<input type="checkbox"/>	<span style="font-size: 0.8em;">▶</span> 1st	VM6404H <span style="font-size: 0.8em;">✖️ 🗑️</span>
<input type="checkbox"/>	<span style="font-size: 0.8em;">▶</span> 1st	VM6404Herewr <span style="font-size: 0.8em;">✖️ 🗑️</span>

More

**Firmware Upgrade**

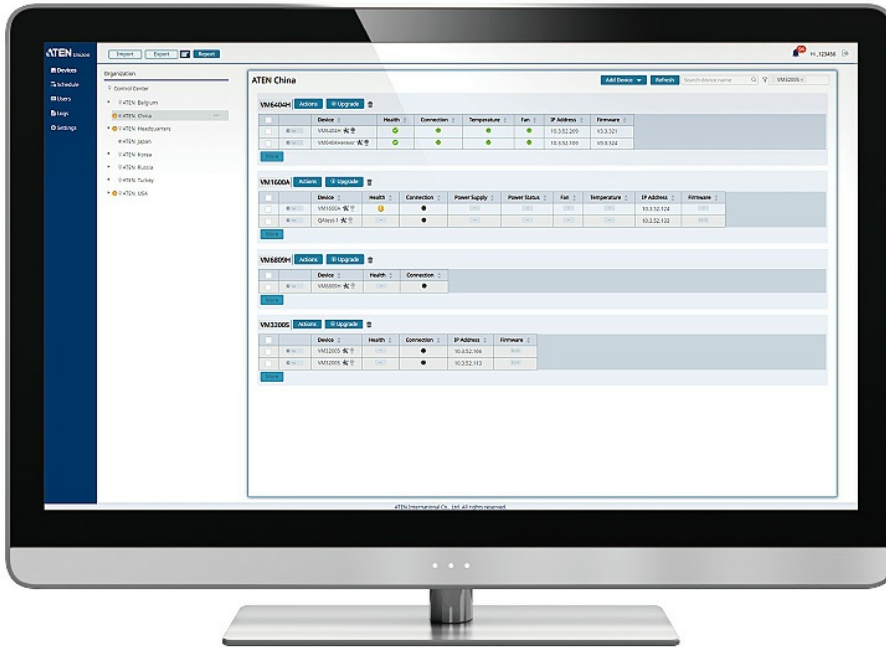
Remotely update the firmware of multiple devices simultaneously directly through the platform, saving you time and maximizing productivity.

## Access and Location Management

Set user access levels and manage devices by room, floor, building, or even by city.

### Device Location Tree

Easily navigate the location of devices on the 5-level location tree by drilling down by room, floor, building, or even city.



### Floor View

View devices across different buildings / floors grouped by device.



Import
Export
Report

**Organization**

- Control Center
- ATEN Belgium
- ATEN China
- ATEN Headqua...
- ATEN Japan
- ATEN Korea

R302
Add Device

VM1600A
Actions
Upgrade
🗑️

		Device	Health	Connection	Power
<input type="checkbox"/>		R409	<span style="color: yellow;">!</span>	<span style="color: green;">●</span>	
<input type="checkbox"/>	1st	QAtest-1	—	<span style="color: black;">●</span>	

More

**Room View**

View information for individual devices located in a single room.

**User Roles and Access Levels**

Define User Roles and respective permission access levels on a room-by-room basis so that information can be accessed by relevant people only.

ATEN Union
🔔 94 H, 123456

**Users**

- Administrator
- Mike
- Gary
- Leo
- mike

Basic
Access

Username

Valid characters include uppercase and lowercase letters, numbers, and special symbols (~!@\_&).

Password

Valid characters include uppercase and lowercase letters, numbers, space, and special symbols (~!@\_&).

Confirm Password

Valid characters include uppercase and lowercase letters, numbers, space, and special symbols (~!@\_&).

**User Type**

Administrator
  Standard User

Discard
Apply

**Features**

ATEN Unizon™ is a server-based software for remote centralized monitoring, control, and management of Ethernet-based ATEN Video Matrix Switches, ATEN Room Booking System, and 3rd party devices (such as projectors, lights, and AV devices) connected to ATEN Control System Controllers.

By providing real-time access to device status, the platform streamlines daily AV/IT management, troubleshooting, analytics, and automation, making it the perfect solution to manage mass device deployments.

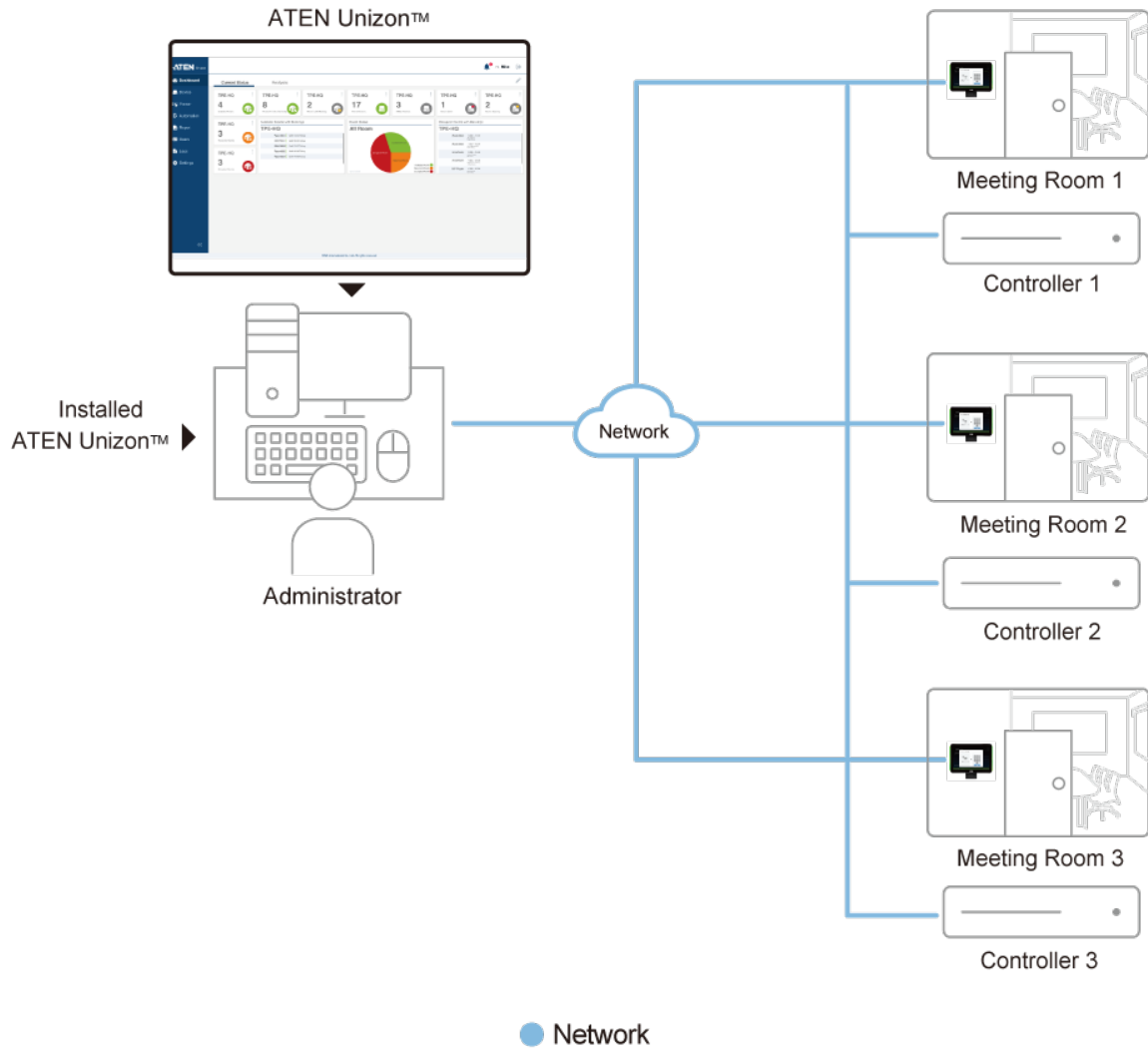
ATEN Unizon also manages user profiles. With [VK401](#) attached to [VK430](#) / [VK330](#), ATEN Unizon gives access rights to authorized personnel when check in on RBS panel. Besides, by integrating with VK control system, it facilitates conference room automation solutions.

- Centralized device monitoring, control, and management
  - ATEN Video Matrix Switches, Room Booking System, Control System solutions, including the managed third-party devices
  - Detection of device statuses, such as lamp hour of a projector and connection status for remote troubleshooting and maintenance
  - Batch device control and firmware upgrades
- Intuitive user interface for large-scale Pro AV applications, easy room monitoring and management across multiple locations
  - 5-level deployment tree
  - Supports room view and floor view
  - Configurable users access rights
- Predefined scenarios for automation and task scheduling
  - Provide meeting scenarios to choose and triggers actions from controllers
  - Automatically turn on / off lights, air-con, meeting room devices based on predefined actions
- Dashboard for current status and analytics
  - Current status info for real-time troubleshooting
  - Analytics of past usage records for future optimization
  - Preset rules for generating regular reports for optimizing device maintenance arrangement
- User profiles are managed in the Directory, including user name, email, pin code and card numbers etc.
- Logs device usage, notifications, and emails for abnormal events for usability analysis and future optimization
- Supports mainstream web browsers
- License of different amount of controlled devices can be purchased based on users' need

**Specification**

Processor	3.2GHz
OS Support	Windows 8 (32/64 bit) and above
Storage Capacity	10 GB available hard disk space
System Memory	8 GB
Web Browser	Internet Explorer v.11 or later Microsoft Edge v.79.0.309 or later Mozilla Firefox v.72.0 or later Google Chrome v.80.0 or later
License	
Activation	<ul style="list-style-type: none"> <li>• UNIZON-BASIC (Number of Managed Devices: 50)</li> <li>• UNIZON-STD (Number of Managed Devices: 500)</li> </ul>
Maintenance	<ul style="list-style-type: none"> <li>• UNIZON-EXT1 (Supported Upgrade Durations for 1 Year)</li> <li>• UNIZON-EXT3 (Supported Upgrade Durations for 3 Year)</li> <li>• UNIZON-EXTLIFE (Supported Upgrade Durations for Lifetime)</li> </ul>
Add-ons	<ul style="list-style-type: none"> <li>• UNIZON-DEV10 (Additional 10 Devices for Management)</li> <li>• UNIZON-TIMETABLE (Timetable Feature Add-on)</li> </ul>
Note	When no license is uploaded, upto 3 devices can be managed.

Diagram



**ATEN International Co., Ltd.**

3F., No.125, Sec. 2, Datong Rd., Sijhih District., New Taipei City 221, Taiwan  
 Phone: 886-2-8692-6789 Fax: 886-2-8692-6767  
 www.aten.com E-mail: marketing@aten.com



© Copyright 2015 ATEN® International Co., Ltd.  
 ATEN and the ATEN logo are trademarks of ATEN International Co., Ltd.  
 All rights reserved. All other trademarks are the property of their respective owners.